



# PREWETTS MILL

## APARTMENTS

---

MILL BAY LANE • HORSHAM RH12 1ST



# PREWETTS MILL

## APARTMENTS

BY AWARD WINNING ARCHITECT TAKERO SHIMAZAKI

---

MILL BAY LANE • HORSHAM RH12 1ST



## A GLORIOUS PAST

There has been a mill on this land in Horsham since 1855. William Prewett became the mill owner in 1872. Under his ownership the mill became an important hub of economic activity in Horsham, employing many skilled workers. Inevitably, the mill experienced many changes during its lifetime including the move from steam power to electricity in the 1940s.

Over the years, Prewett's Mill gained a worldwide reputation for its products, exporting stone-ground flour to Africa and Canada, as well as throughout England. It continued to prosper until it finally closed in 1978.



Left: Prewetts Mill, circa 1890

Above: Prewetts Mill produce, circa 1961

Photographs courtesy of Horsham Museum



Computer generated illustration is indicative only.



## AN EXCITING FUTURE

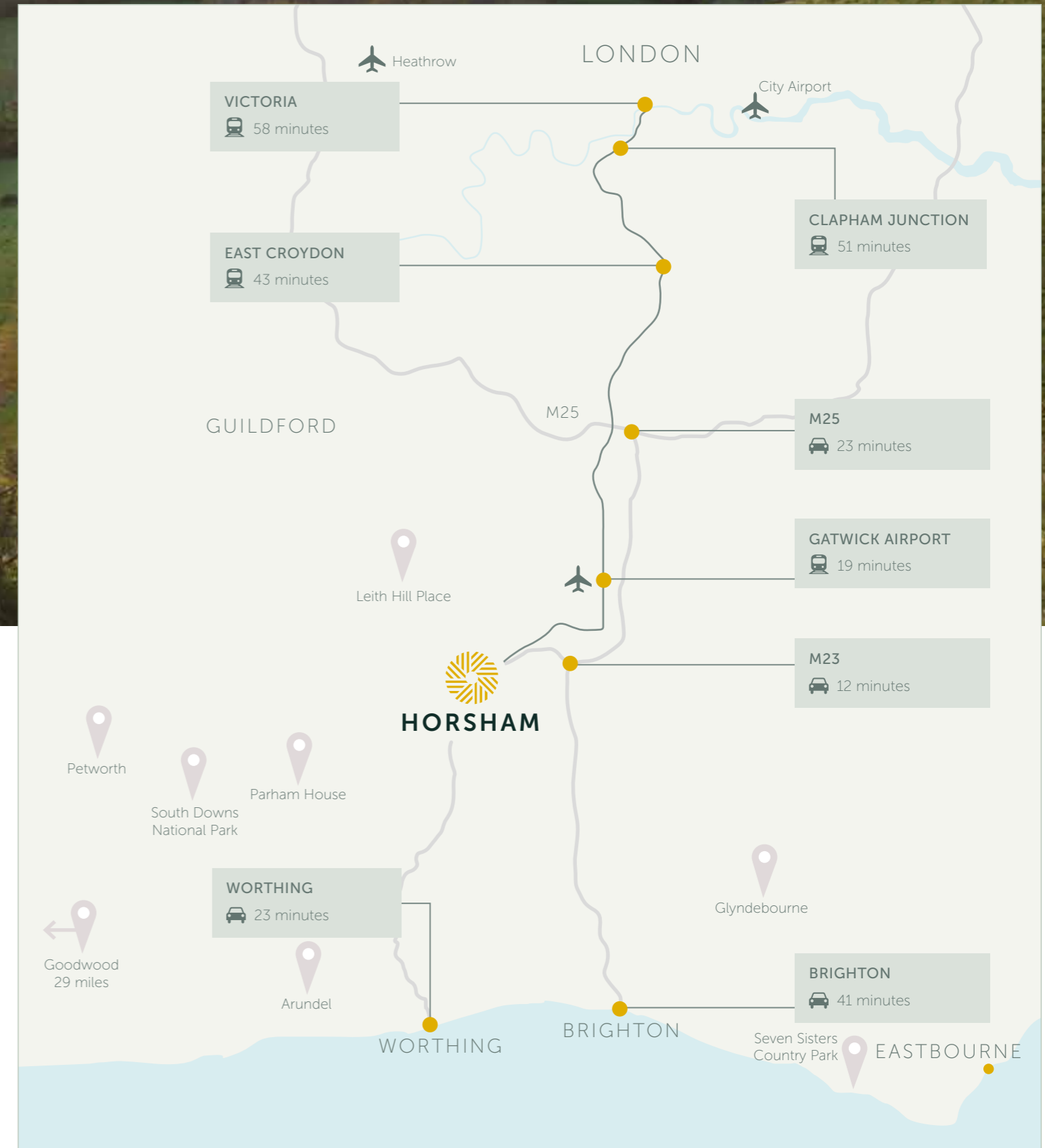
Prewetts Mill is being given a new lease of life, ensuring its place in the future as an historic Horsham landmark.

Award-winning architect Takero Shimazaki has designed a sympathetic conversion and extension of the former mill to create an exceptional collection of fifty nine 1, 2, 3 and 4 bedroom lateral and duplex apartments, finished to the best of contemporary standards in a landscaped setting alongside the River Arun.

Prewetts Mill is located within close proximity of Horsham's diverse array of amenities and within easy reach of road and rail networks.



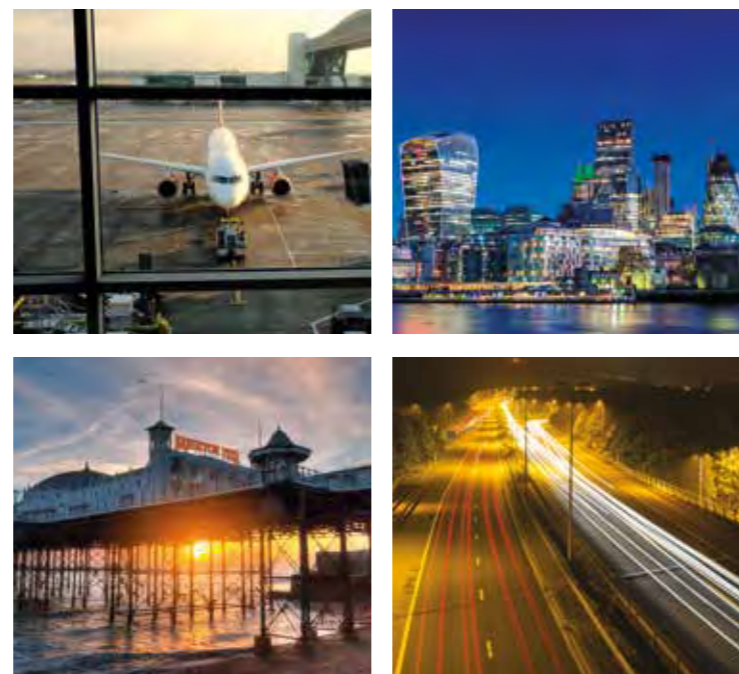
Computer generated illustration is indicative only.



## CONNECTED LIVING

Whether you want the convenience of Horsham town centre on your doorstep, access to main road networks to London, Gatwick and the south coast or mainline rail links to the heart of the capital, Prewetts Mill is where you'll want to be.

Horsham is also surrounded by some of the south's most beautiful countryside, including the South Downs National Park, perfect for walking, cycling and a host of other outdoor pursuits.



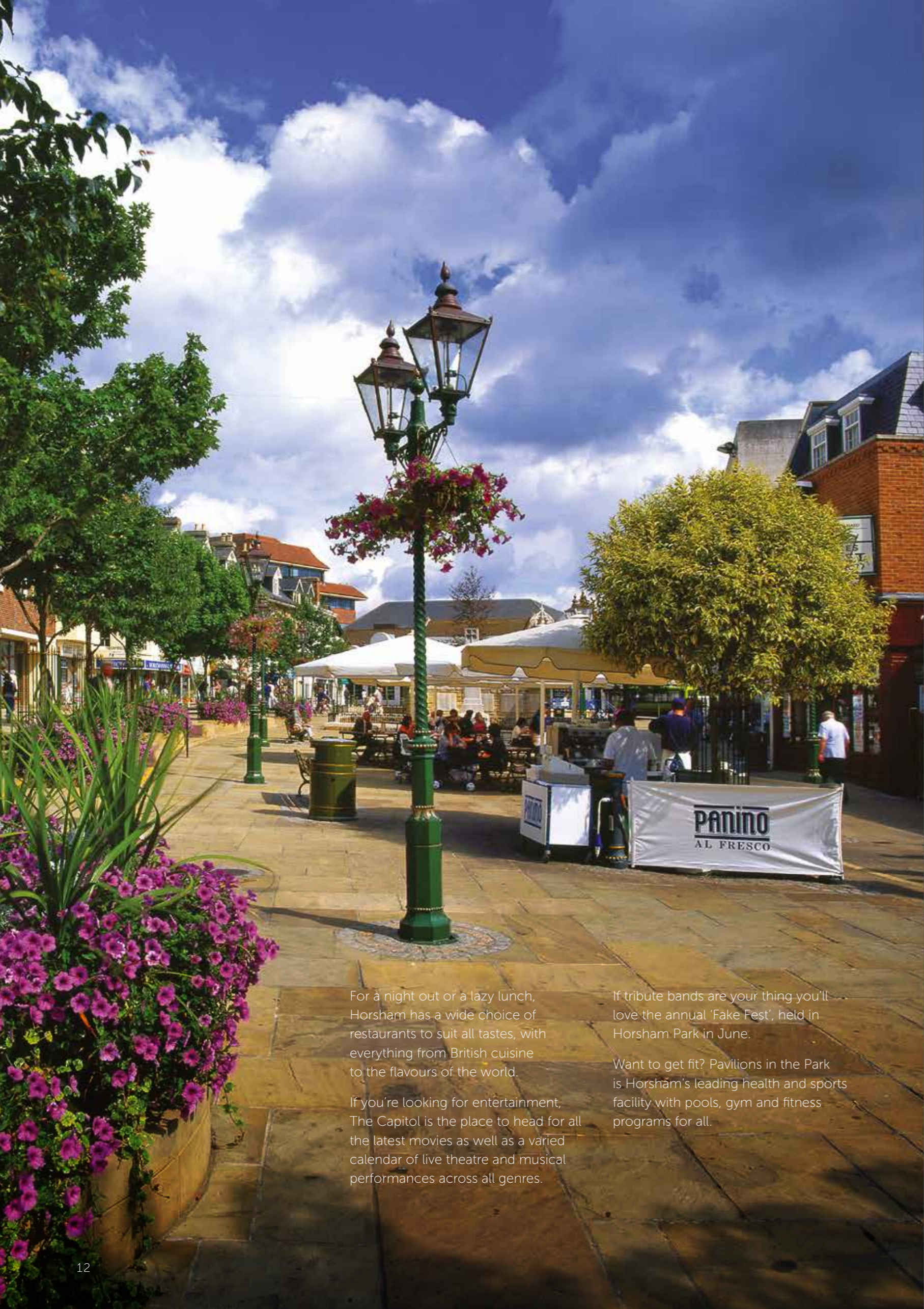


## CLOSE TO THE HEART OF IT ALL

Prewetts Mill is just a short walk from the lively, characterful heart of Horsham. The pedestrianised centre plays host to a wide range of retailers, including Swan Walk shopping centre, while John Lewis, Waitrose

and Sainsbury's are virtually on the doorstep. Every Thursday and Saturday a market in Carfax brings the opportunity to buy local produce, including cheese, seafood, meat and bread as well as jewellery and craft items.





For a night out or a lazy lunch, Horsham has a wide choice of restaurants to suit all tastes, with everything from British cuisine to the flavours of the world.

If you're looking for entertainment, The Capitol is the place to head for all the latest movies as well as a varied calendar of live theatre and musical performances across all genres.

If tribute bands are your thing you'll love the annual 'Fake Fest', held in Horsham Park in June.

Want to get fit? Pavilions in the Park is Horsham's leading health and sports facility with pools, gym and fitness programs for all.



**PUBLIC AMENITIES**

- 1 Horsham Railway Station
- 2 Horsham Library
- 3 Horsham Museum
- 4 Riverside Surgery
- 5 Park Surgery
- 6 The Capitol Horsham

**RECREATION**

- 1 Horsham Sports Club
- 2 Park House
- 3 Human Nature Garden
- 4 Pavilions in the Park
- 5 Riverside walkway into town
- 6 Chesworth Farm

**SHOPPING/EATING**

- 1 Waitrose / John Lewis
- 2 Restaurant Tristan (Michelin Star)
- 3 Swan Walk Shopping Centre
- 4 Sainsbury's
- 5 Marks and Spencer
- 6 Cloud Gallery Fine Art

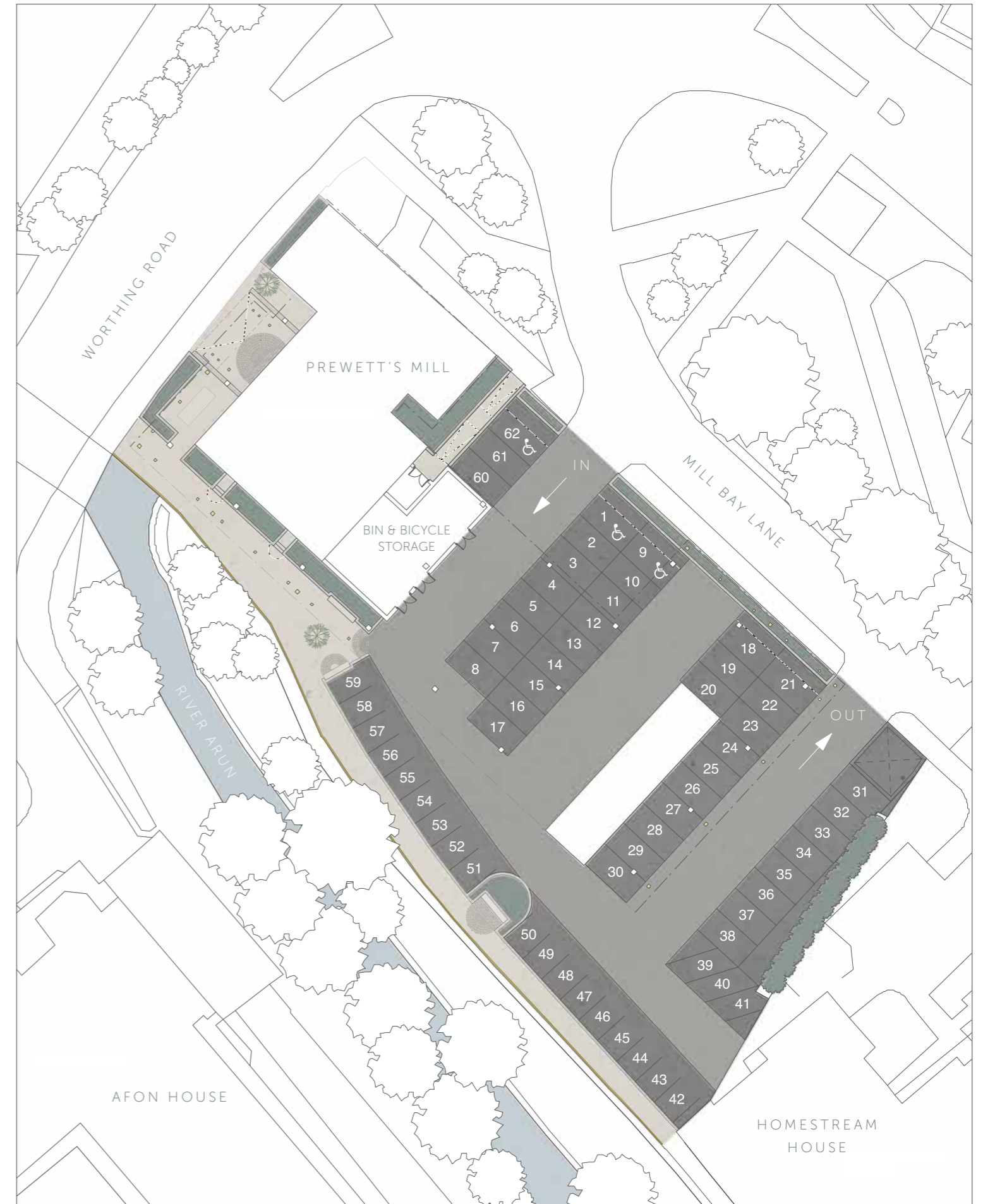
**LOCAL SCHOOLS**

- 1 The College of Richard Collyer
- 2 St Mary's C Of E Primary School
- 3 Millais School
- 4 Heron Way Primary School
- 5 Tanbridge House School
- 6 Christs Hospital (Blue Coats)





A LANDSCAPED SETTING  
ALONGSIDE THE RIVER ARUN





## DESIGNED FOR TODAY

Takero Shimazaki is an award-winning architects practice renowned for its attention to detail on both finish and textures. These apartments will provide elegant living spaces within imaginatively landscaped settings in this beautiful riverside location.



## EXTERNAL FEATURES

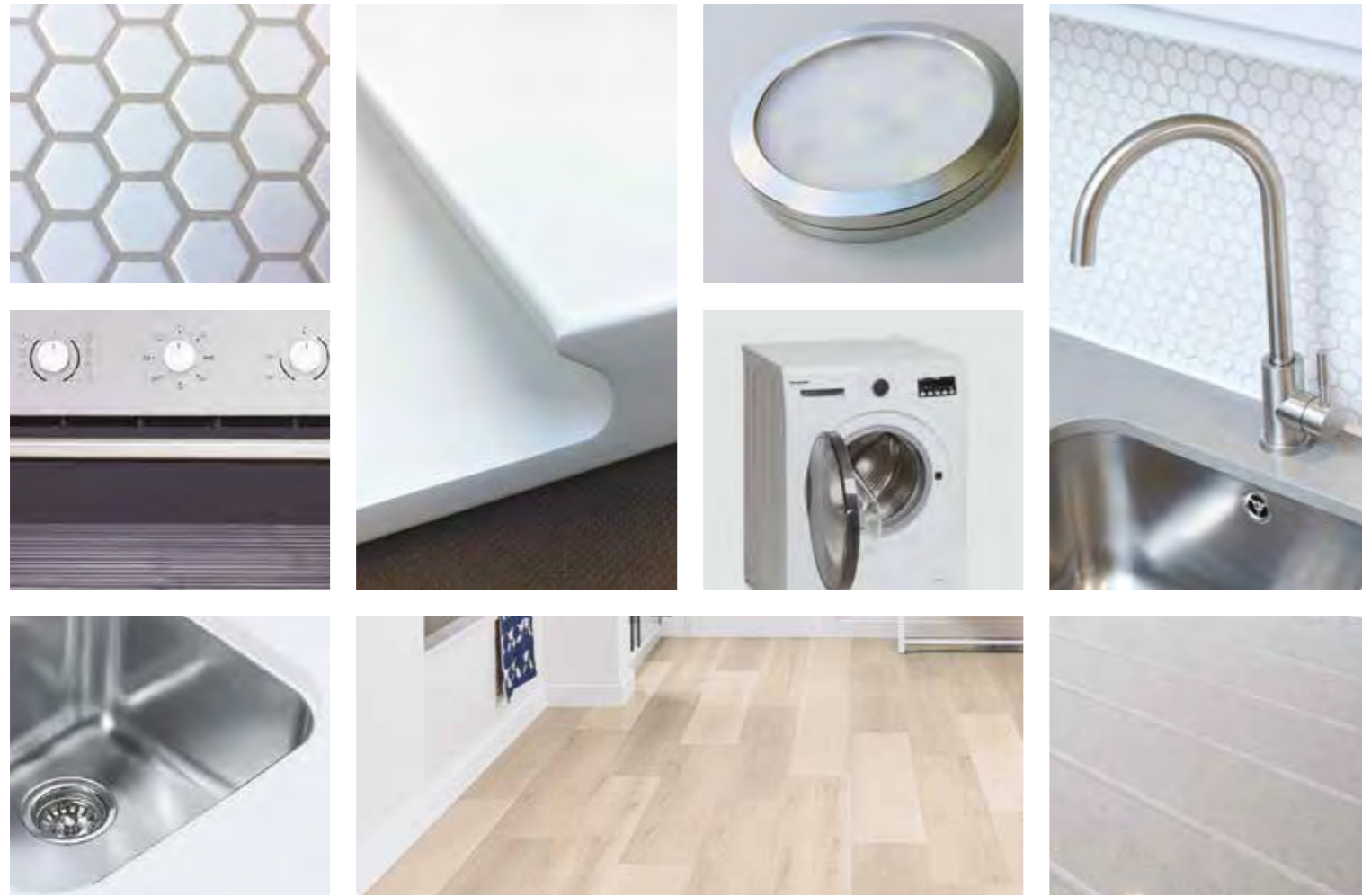
- Double glazed aluminium windows and balcony doors, with 'anodic champagne' powder coating
- Double glazed aluminium windows for clerestory bedrooms and shower rooms where applicable, with anthracite powder coating
- Tiles on balconies and terraces
- Powder-coated 'champagne' balustrades, balconies and Juliet balconies
- Silver lustre, Russwood Siberian larch cladding to all elevations and dormers. This has high durability and resistance to decay.
- Two-tone steel cladding to mansard and clerestory roofs
- Elegant brick paving to walkways, ramps and the river walk
- Planting and external seating to selected areas
- Newly landscaped river walk



## COMMUNAL AREAS

- Elegantly decorated corridors with walnut timber arches and architraves
- Quality stone tiling with feature borders in the entrance hall
- Walnut furniture in the reception area
- Natural lime based Kalkpaint in entrance hall giving superb depth and matt textured finish to walls
- British made cashmere goat hair carpeted stairs and communal corridors which helps to reduce airborne dust and allergens
- Integrated semi-circle entry mat framed in a brass trim to all front doors
- Two 8 passenger lifts - with champagne coloured doors
- Emergency telephone installed in both lifts
- Elegant laser cut dibond wall-mounted door numbers
- Metal designer lighting controlled by energy-saving movement sensors in the corridors
- Colt ventilation system and electromagnet door system providing permanent natural day to day ventilation to communal staircases and corridors to keep the air fresh
- Secure built-in post-boxes in the main lobby
- Enclosed refuse and recycle storage
- Enclosed and secured bicycle parking area
- Allocated parking space for each apartment
- Low annual service charges



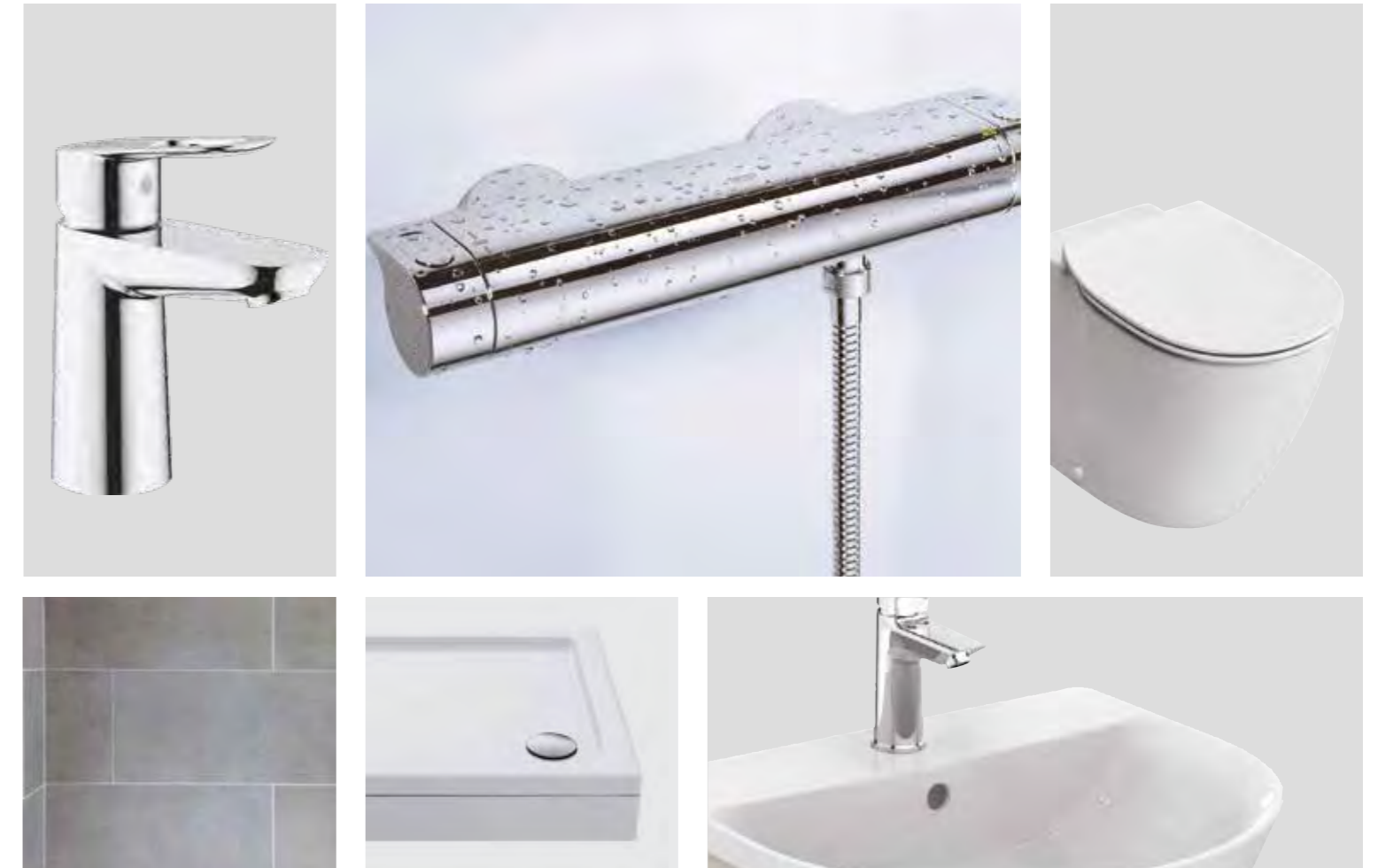


## QUALITY BATHROOMS & SHOWER ROOMS

- Ideal Standard 'back to wall' toilet with soft-close seat
- Concealed cistern with chrome dual flush plate
- Stone countertop with full height mirror above
- Ideal Standard semi-recessed hand wash basin
- Contemporary chrome Grohe tap with EcoJoy™ Mousseur that aerates the water and reduces water consumption
- Grohe thermostatic shower mixer set with three spray pattern shower head
- Heated chrome towel rail
- Quiet extractor fan with humidity sensor
- Electrical shaver point
- Double size showers with quality British made sliding doors<sup>2</sup>
- Bath with shower and screen to bathroom
- Contemporary light grey wall tiles enclosing the shower area
- Ceramic tiled flooring

## INDIVIDUALLY DESIGNED KITCHENS

- Contemporary styled kitchen furniture with Italian handless lacquered doors with a 5-year guarantee
- White quartz stone worktop with drainer grooves and under-mounted sink
- Mosaic tile splashback in matte white
- Genuine soft-close hinges to all drawers and doors
- Montpellier 4 zones induction hob and integrated cooker hood with external extract<sup>1</sup>
- Integrated Montpellier oven (energy rating A)<sup>1</sup>
- Integrated Montpellier fridge/freezer 70/30 split (undercounter fridge in studios)<sup>1</sup>
- Integrated Montpellier dishwasher (energy rating A+)<sup>1</sup>
- Integrated microwave
- Freestanding Montpellier 7kg washer dryer in storage cupboard<sup>1</sup>
- Single lever brushed steel mixer tap
- Centralised appliance switch panel located inside kitchen wall cabinets
- Two double British General power sockets above worktop
- Low energy LED under-cupboard lighting with switch above worktop



<sup>1</sup> All Montpellier appliances come with a 2-year manufacturer's parts and labour guarantee

<sup>2</sup> Shower tray raised by 100mm for easy maintenance

## INTERIOR FINISHES

- Full height powder-coated, double-glazed aluminium windows with a champagne finish
- 44mm thick flush walnut veneered entrance door to each apartment
- Contemporary, white internal doors with brushed-steel door furniture
- Full height utility cupboards in either the entrance lobby, toilet or shower room housing hot water cylinder and condensing washing machine/dryer
- Satin paint finish to all internal skirting, architraves and doors
- Quality oak plank style flooring throughout providing a low maintenance flooring solution
- Fitted British made and easy clean carpet with a 10-year manufacturer's guarantee in duplex bedrooms and staircases

## HEATING, ELECTRICAL & LIGHTING

- Individual electric hot water cylinder
- Silent electric panel radiators with individual thermostat controls
- Dimmable LED downlights in kitchen, living area, hall and bathroom / shower rooms
- Dimmable pendant lighting in bedrooms
- Quality British General electrical sockets and switches throughout
- Convenient master switch to turn off all lights in apartment located by the entrance door



## SECURITY & PEACE OF MIND

- 10-year new homes warranty
- High-security apartment entrance door with multi-point locking system
- Intercom, key fob door entry system
- Audio entry phone system with direct connection to the concierge desk
- CCTV in the communal areas and car park with monitors at concierge desk
- Interlinked fire detection system fitted in hallways and kitchen areas of each apartment
- Colt fire detection system in communal areas and smoke vents
- Reception with day time concierge provided free of charge by the developer during the first two years

## HOME ENTERTAINMENT & COMMUNICATIONS

- Infrastructure for connectivity to include TV, FM digital radio and Sky Q satellite points in living room and bedrooms
- Telephone socket in living room



FLOOR PLANS



# GROUND FLOOR

**01** 1 Bedroom Apartment  
**Kitchen/Living Room**  
 5.68m x 4.79m 18'7" x 15'8"  
**Bedroom**  
 3.84m x 2.72m 12'7" x 8'11"

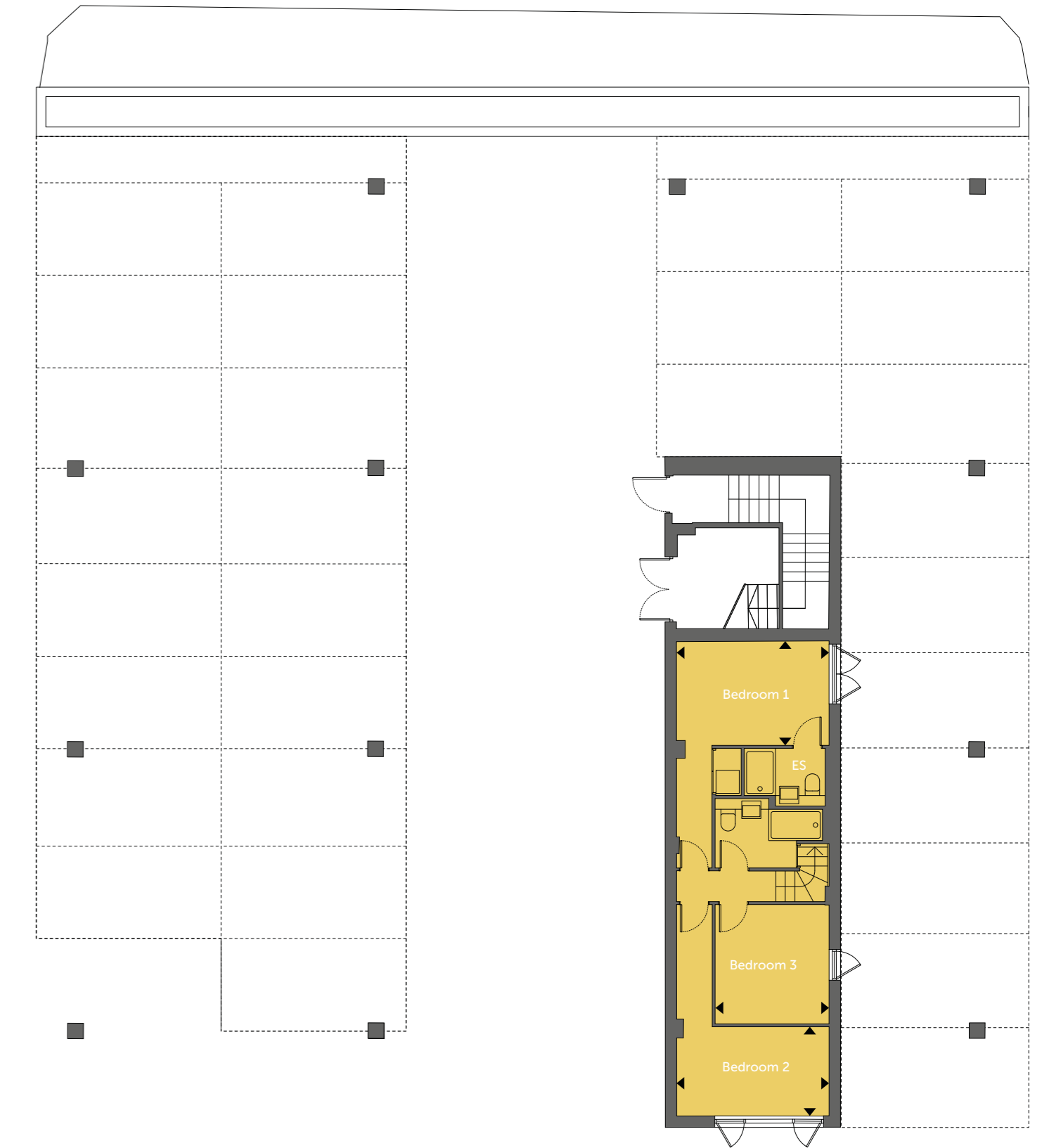
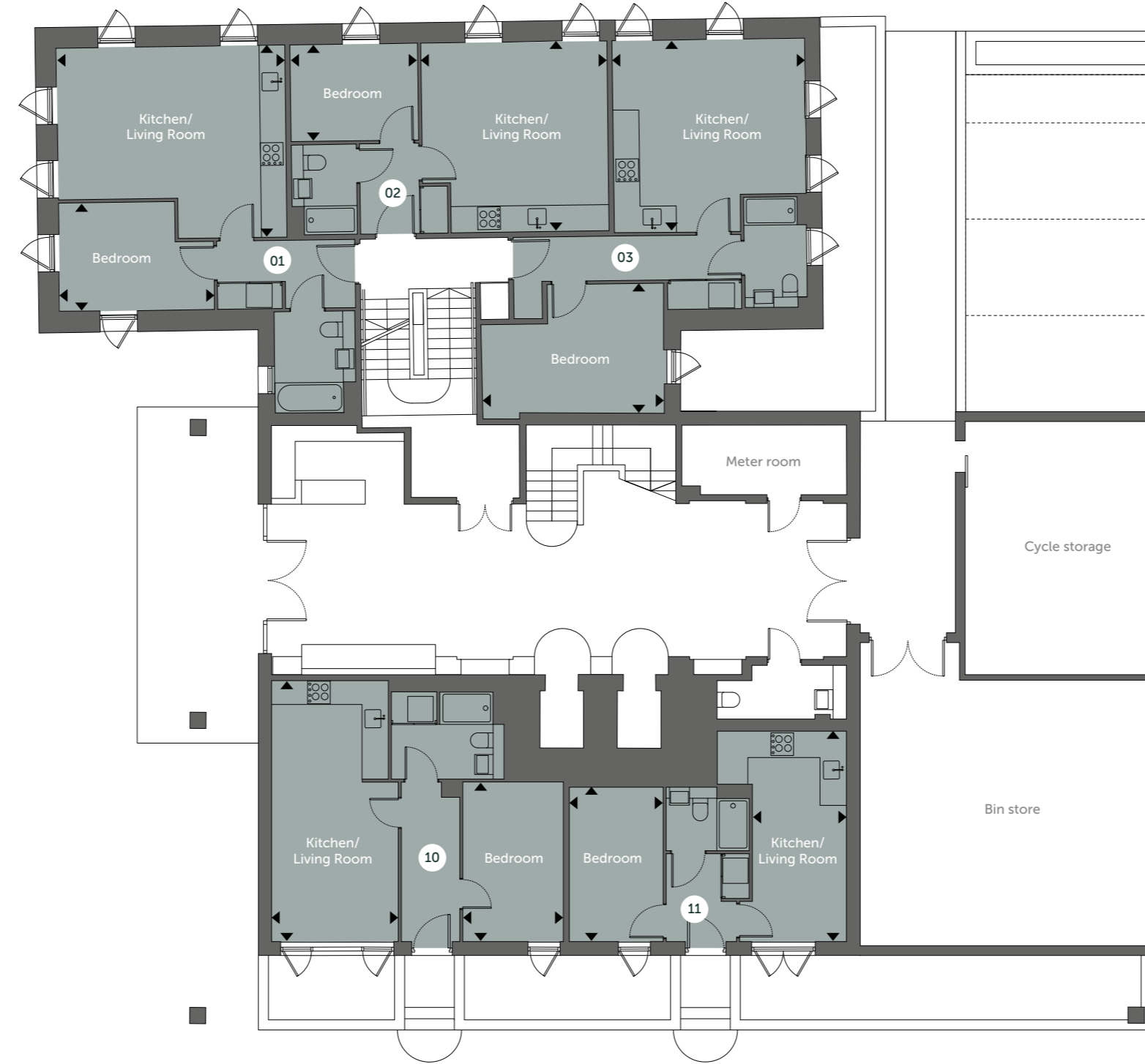
**02** 1 Bedroom Apartment  
**Kitchen/Living Room**  
 4.64m x 4.74m 15'2" x 15'6"  
**Bedroom**  
 3.18m x 2.41m 10'5" x 7'10"

**03** 1 Bedroom Apartment  
**Kitchen/Living Room**  
 4.68m x 4.79m 15'4" x 15'8"  
**Bedroom**  
 4.55m x 3.21m 14'11" x 10'6"

**10** 1 Bedroom Apartment  
**Kitchen/Living Room**  
 3.15m x 6.51m 10'4" x 21'4"  
**Bedroom**  
 2.5m x 3.98m 8'2" x 13'0"

**11** 1 Bedroom Apartment  
**Kitchen/Living Room**  
 2.35m x 5.25m 7'8" x 17'2"  
**Bedroom**  
 2.34m x 3.85m 7'8" x 12'7"

**21** 3 Bedroom Duplex  
**Bedroom 1**  
 3.95m x 2.32m 12'11" x 7'7"  
**Bedroom 2**  
 2.96m x 3.10m 9'8" x 10'2"  
**Bedroom 3**  
 3.96m x 2.70m 12'11" x 8'10"

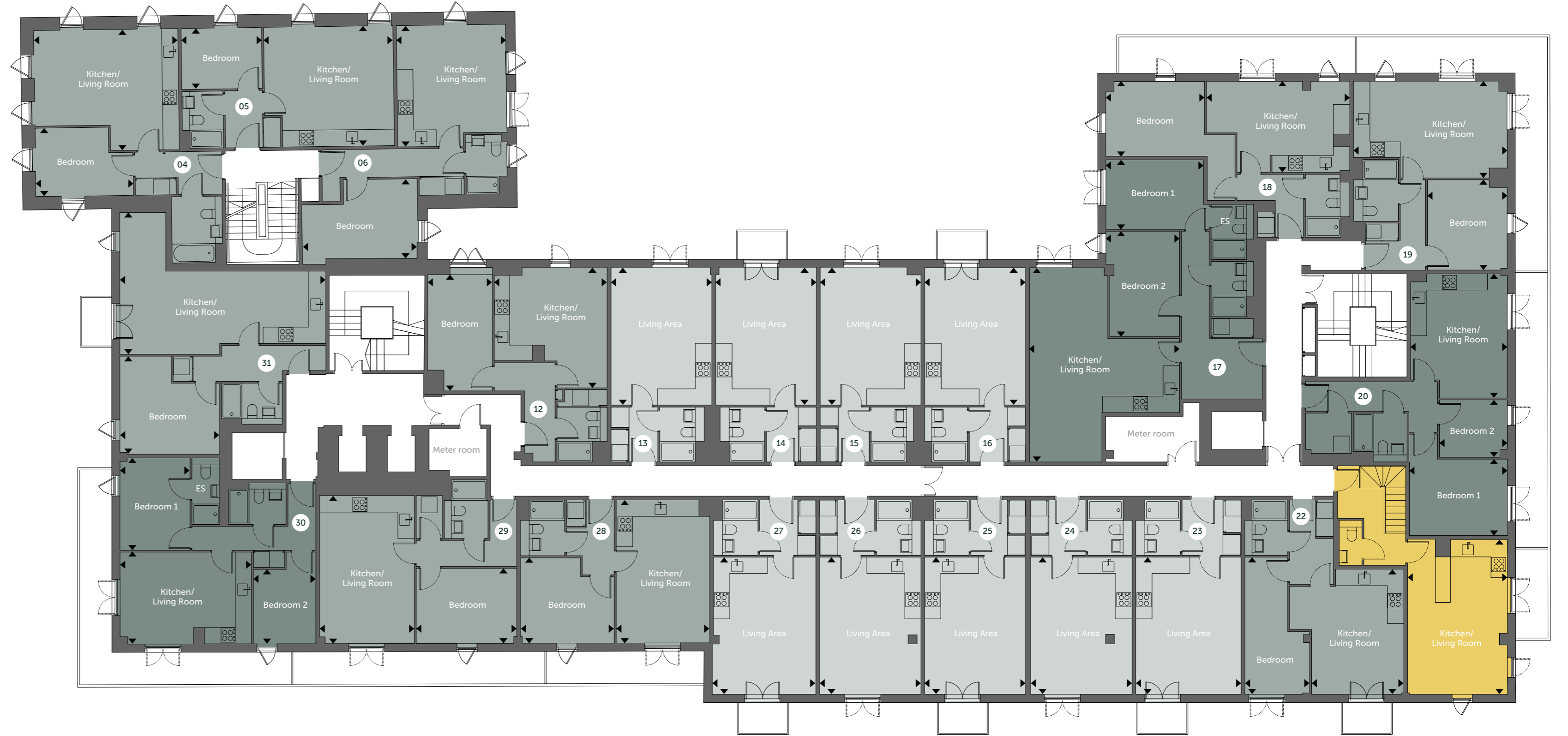


# FIRST FLOOR

<b>04</b>	1 Bedroom Apartment	Kitchen/Living Room 5.69m x 4.79m	18'8" x 15'8"
		Bedroom 3.84m x 2.71m	12'7" x 8'10"
<b>05</b>	1 Bedroom Apartment	Kitchen/Living Room 5.12m x 4.74m	16'9" x 15'6"
		Bedroom 3.18m x 2.41m	10'5" x 7'10"
<b>06</b>	1 Bedroom Apartment	Kitchen/Living Room 4.33m x 4.8m	14'2" x 15'9"
		Bedroom 4.56m x 3.15m	14'11" x 10'4"
<b>12</b>	1 Bedroom Apartment	Kitchen/Living Room 4.46m x 4.76m	14'7" x 15'7"
		Bedroom 2.52m x 4.6m	8'3" x 15'1"
<b>13</b>	Studio Apartment	Living Room 3.98m x 5.45m	13'0" x 17'10"
<b>14</b>	Studio Apartment	Living Room 3.98m x 5.45m	13'0" x 17'10"
<b>15</b>	Studio Apartment	Living Room 3.98m x 5.45m	13'0" x 17'10"
<b>16</b>	Studio Apartment	Living Room 3.98m x 5.45m	13'0" x 17'10"
<b>17</b>	2 Bedroom Apartment	Kitchen/Living Room 5.94m x 7.73m	19'5" x 25'4"
		Bedroom 1 3.86m x 2.75m	12'8" x 9'0"
		Bedroom 2 2.91m x 4.17m	9'6" x 13'8"

<b>18</b>	1 Bedroom Apartment	Kitchen/Living Room 5.66m x 3.61m	18'6" x 11'10"
		Bedroom 3.9m x 2.96m	12'9" x 9'8"
<b>19</b>	1 Bedroom Apartment	Kitchen/Living Room 6.07m x 3.83m	19'11" x 12'6"
		Bedroom 3.15m x 3.57m	10'4" x 11'8"
<b>20</b>	2 Bedroom Apartment	Kitchen/Living Room 3.82m x 4.90m	12'6" x 16'0"
		Bedroom 1 3.87m x 3.02m	12'8" x 9'10"
		Bedroom 2 2.68m x 2.27m	8'9" x 7'5"
<b>21</b>	3 Bedroom Duplex	Kitchen/Living Room 3.95m x 6.13m	12'11" x 20'1"
<b>22</b>	1 Bedroom Apartment	Kitchen/Living Room 3.64m x 4.95m	11'11" x 16'2"
		Bedroom 2.56m x 5.34m	8'4" x 17'6"
<b>23</b>	Studio Apartment	Living Room 4.16m x 5.42m	13'7" x 17'9"
<b>24</b>	Studio Apartment	Living Room 4.06m x 5.42m	13'3" x 17'9"
<b>25</b>	Studio Apartment	Living Room 3.98m x 5.42m	13'0" x 17'9"

<b>26</b>	Studio Apartment	Living Room 4.00m x 5.42m	13'1" x 17'9"
<b>27</b>	Studio Apartment	Living Room 4.04m x 5.42m	13'3" x 17'9"
<b>28</b>	1 Bedroom Apartment	Kitchen/Living Room 3.70m x 5.66m	12'10" x 18'6"
		Bedroom 3.70m x 3.38m	12'1" x 11'1"
<b>29</b>	1 Bedroom Apartment	Kitchen/Living Room 3.74m x 5.86m	12'3" x 19'2"
		Bedroom 3.97m x 2.96m	13'0" x 9'8"
<b>30</b>	2 Bedroom Apartment	Kitchen/Living Room 5.19m x 3.63m	17'0" x 11'10"
		Bedroom 1 2.77m x 3.65m	9'1" x 11'11"
		Bedroom 2 2.47m x 2.94m	8'1" x 9'7"
<b>31</b>	1 Bedroom Apartment	Kitchen/Living Room 8.14m x 5.61m	26'8" x 18'4"
		Bedroom 3.94m x 3.87m	12'11" x 12'8"



S - Store ES - Ensuite - - - - - Reduced ceiling height 1.5m



# SECOND FLOOR

<b>07</b>	1 Bedroom Apartment	Kitchen/Living Room 5.69m x 4.79m	18'8" x 15'8"
		Bedroom 3.84m x 2.70m	12'7" x 8'10"
<b>08</b>	1 Bedroom Apartment	Kitchen/Living Room 5.12m x 4.74m	16'9" x 15'6"
		Bedroom 3.18m x 2.41m	10'5" x 7'10"
<b>09</b>	1 Bedroom Apartment	Kitchen/Living Room 4.20m x 4.79m	13'9" x 15'8"
		Bedroom 4.55m x 3.15m	14'11" x 10'4"
<b>32</b>	3 Bedroom Duplex	Bedroom 1 2.65m x 3.43m	8'8" x 11'3"
		Bedroom 2 3.59m x 2.66m	11'9" x 8'8"
<b>33</b>	3 Bedroom Duplex	Kitchen 2.59m x 3.24m	8'6" x 10'7"
		Living Room 2.95m x 4.37m	9'8" x 14'4"
<b>34</b>	3 Bedroom Duplex	Kitchen 3.03m x 3.30m	9'11" x 10'9"
		Living Room 2.76m x 4.37m	9'0" x 14'4"
<b>35</b>	3 Bedroom Duplex	Kitchen/Living Room 3.66m x 4.38m	12'0" x 14'4"
<b>36</b>	3 Bedroom Duplex	Kitchen/Living Room 9.41m x 5.12m	30'10" x 16'9"
<b>37</b>	3 Bedroom Duplex	Kitchen/Living Room 5.08m x 5.40m	16'8" x 17'8"

<b>38</b>	2 Bedroom Duplex	Kitchen/Living Room 7.55m x 3.91m	24'9" x 12'9"
<b>39</b>	1 Bedroom Duplex	Bedroom 4.01m x 5.79m	13'1" x 18'11"
<b>40</b>	3 Bedroom Duplex	Bedroom 1 2.47m x 3.66m	8'1" x 12'0"
		Bedroom 2 2.79m x 2.36m	9'1" x 7'8"
		Bedroom 3 3.09m x 2.03m	10'1" x 6'7"
<b>41</b>	4 Bedroom Duplex	Kitchen/Living Room 6.58m x 5.24m	21'7" x 17'2"
<b>42</b>	4 Bedroom Duplex	Kitchen/Living Room 5.77m x 5.60m	18'11" x 18'4"
<b>43</b>	1 Bedroom Duplex	Bedroom 2.32m x 3.68m	7'7" x 12'0"
<b>44</b>	2 Bedroom Duplex	Living Room 5.94m x 5.25m	19'5" x 17'2"
<b>45</b>	2 Bedroom Duplex	Living Room 3.75m x 5.71m	12'3" x 18'8"
<b>46</b>	2 Bedroom Duplex	Living Room 3.75m x 5.71m	12'3" x 18'8"
<b>47</b>	2 Bedroom Duplex	Living Room 3.75m x 5.71m	12'3" x 18'8"
<b>48</b>	2 Bedroom Duplex	Living Room 3.75m x 5.71m	12'3" x 18'8"

<b>49</b>	2 Bedroom Duplex	Living Room 3.75m x 5.71m	12'3" x 18'8"
<b>50</b>	2 Bedroom Duplex	Living Room 3.75m x 5.71m	12'3" x 18'8"
<b>51</b>	2 Bedroom Duplex	Living Room 3.75m x 5.71m	12'3" x 18'8"
<b>52</b>	2 Bedroom Duplex	Living Room 3.75m x 5.71m	12'3" x 18'8"
<b>53</b>	2 Bedroom Duplex	Living Room 3.76m x 5.71m	12'4" x 18'8"
<b>54</b>	2 Bedroom Duplex	Living Room 3.79m x 5.71m	12'5" x 18'8"
<b>55</b>	2 Bedroom Duplex	Living Room 3.75m x 5.71m	12'3" x 18'8"
<b>56</b>	2 Bedroom Duplex	Living Room 3.74m x 4.79m	12'3" x 15'8"
<b>57</b>	2 Bedroom Duplex	Living Room 5.95m x 3.70m	19'6" x 12'1"
<b>58</b>	2 Bedroom Duplex	Kitchen 4.78m x 2.96m	15'8" x 9'8"
		Living Room 3.91m x 2.83m	12'9" x 9'3"
<b>59</b>	3 Bedroom Duplex	Living Room 4.84m x 3.79m	15'10" x 12'5"



S - Store ES - Ensuite - - - - - Reduced ceiling height 1.5m

# THIRD FLOOR MANSARD

<b>32</b>	<b>3 Bedroom Duplex</b> Living Room 3.64m x 3.50m    11'11" x 11'5" Bedroom 3 2.69m x 3.46m    8'9" x 11'4"
<b>33</b>	<b>3 Bedroom Duplex</b> Bedroom 2 2.95m x 2.76m    9'8" x 9'0"
<b>34</b>	<b>3 Bedroom Duplex</b> Bedroom 1 2.76m x 3.12m    9'0" x 10'2" Bedroom 2 3.03m x 2.77m    9'11" x 9'1"
<b>35</b>	<b>3 Bedroom Duplex</b> Bedroom 1 2.76m x 3.13m    9'0" x 10'3" Bedroom 2 3.01m x 2.77m    9'10" x 9'1"
<b>36</b>	<b>3 Bedroom Duplex</b> Bedroom 1 2.44m x 4.17m    8'0" x 13'8"
<b>37</b>	<b>3 Bedroom Duplex</b> Bedroom 2 3.07m x 2.84m    10'0" x 9'3" Bedroom 3 2.50m x 2.48m    8'2" x 8'1"
<b>38</b>	<b>2 Bedroom Duplex</b> Bedroom 1 3.74m x 3.90m    11'0" x 12'9" Bedroom 2 2.50m x 2.92m    8'2" x 9'7"
<b>39</b>	<b>1 Bedroom Duplex</b> Kitchen/Living Room 4.01m x 5.79m    13'1" x 18'11"
<b>40</b>	<b>3 Bedroom Duplex</b> Kitchen/Living Room 5.98m x 5.79m    19'7" x 18'11"

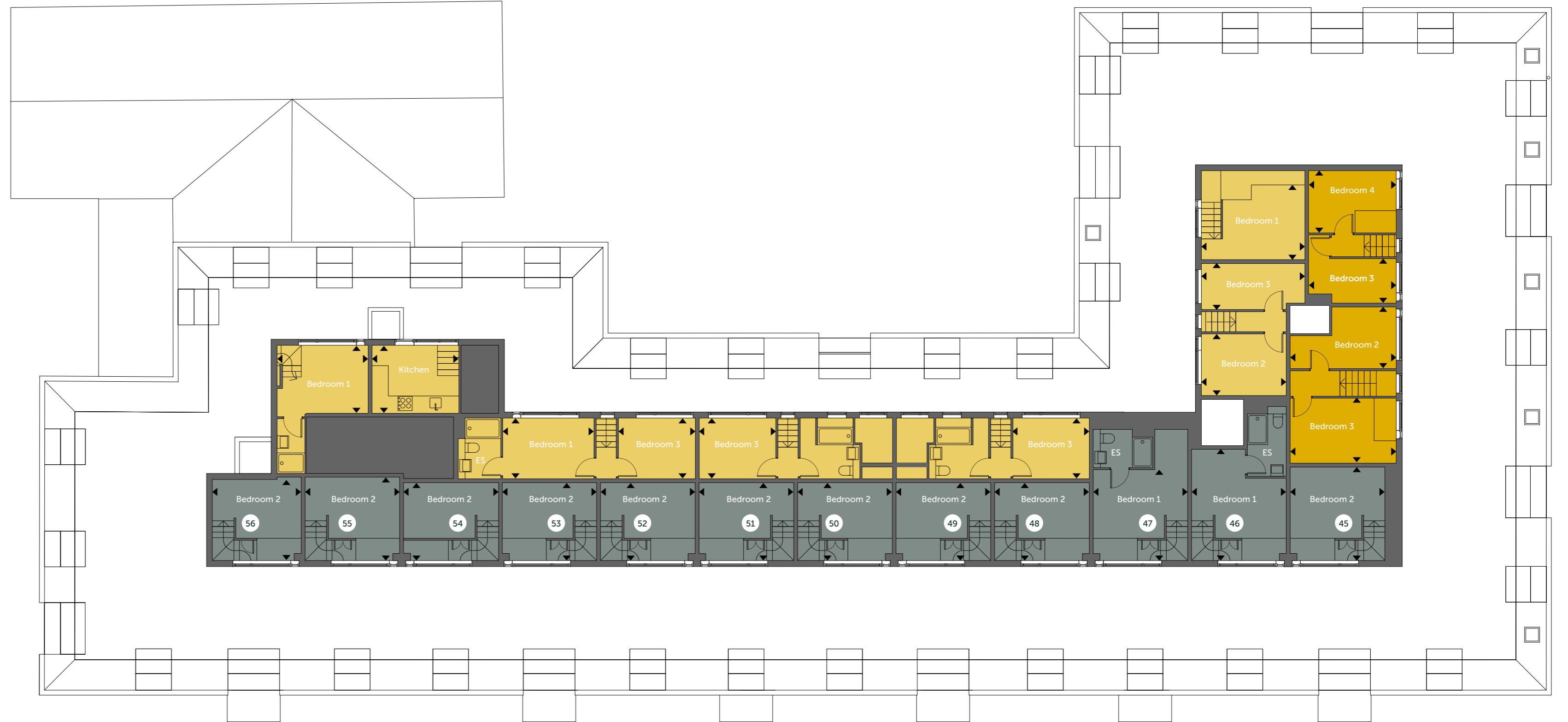
<b>41</b>	<b>4 Bedroom Duplex</b> Bedroom 1 3.35m x 2.69m    10'11" x 8'9" Bedroom 2 3.40m x 2.47m    11'1" x 8'1"
<b>42</b>	<b>4 Bedroom Duplex</b> Bedroom 1 3.54m x 2.45m    11'7" x 8'0" Bedroom 4 2.48m x 3.07m    8'1" x 10'0"
<b>43</b>	<b>1 Bedroom Duplex</b> Kitchen / Living Room 5.94m x 3.68m    19'5" x 12'0"
<b>44</b>	<b>2 Bedroom Duplex</b> Bedroom 1 4.13m x 2.63m    13'6" x 8'7" Bedroom 2 3.38m x 2.30m    11'1" x 7'6"
<b>45</b>	<b>2 Bedroom Duplex</b> Bedroom 1 3.75m x 3.45m    12'3" x 11'3"
<b>46</b>	<b>2 Bedroom Duplex</b> Bedroom 2 3.75m x 3.45m    12'3" x 11'3"
<b>47</b>	<b>2 Bedroom Duplex</b> Bedroom 2 3.75m x 3.45m    12'3" x 11'3"
<b>48</b>	<b>2 Bedroom Duplex</b> Bedroom 1 3.75m x 3.45m    12'3" x 11'3"
<b>49</b>	<b>2 Bedroom Duplex</b> Bedroom 1 3.75m x 3.45m    12'3" x 11'3"
<b>50</b>	<b>2 Bedroom Duplex</b> Bedroom 1 3.75m x 3.45m    12'3" x 11'3"

<b>51</b>	<b>2 Bedroom Duplex</b> Bedroom 1 3.75m x 3.45m    12'3" x 11'3"
<b>52</b>	<b>2 Bedroom Duplex</b> Bedroom 1 3.75m x 3.45m    12'3" x 11'3"
<b>53</b>	<b>2 Bedroom Duplex</b> Bedroom 1 3.76m x 3.45m    12'4" x 11'3"
<b>54</b>	<b>2 Bedroom Duplex</b> Bedroom 1 3.76m x 3.45m    12'4" x 11'3"
<b>55</b>	<b>2 Bedroom Duplex</b> Bedroom 1 3.75m x 3.45m    12'3" x 11'3"
<b>56</b>	<b>2 Bedroom Duplex</b> Bedroom 1 3.74m x 3.45m    12'3" x 11'3"
<b>57</b>	<b>2 Bedroom Duplex</b> Bedroom 1 2.57m x 3.98m    8'5" x 13'0" Bedroom 2 3.30m x 2.46m    10'9" x 8'0"
<b>58</b>	<b>2 Bedroom Duplex</b> Bedroom 1 4.53m x 3.03m    14'10" x 9'11" Bedroom 2 3.6m x 2.55m    11'9" x 8'4"
<b>59</b>	<b>3 Bedroom Duplex</b> Bedroom 2 2.98m x 3.51m    9'9" x 11'6" Bedroom 3 2.51m x 3.46m    8'2" x 11'4"



# THIRD FLOOR CLERESTORY

<b>32</b> 3 Bedroom Duplex Kitchen 3.44m x 2.68m    11'3" x 8'9"	<b>41</b> 4 Bedroom Duplex Bedroom 3 3.47m x 1.69m    11'4" x 5'6" Bedroom 4 3.47m x 2.46m    11'4" x 8'0"	<b>50</b> 2 Bedroom Duplex Bedroom 2 3.75m x 3.08m    12'3" x 10'1"
<b>33</b> 3 Bedroom Duplex Bedroom 1 3.62m x 2.41m    11'10" x 7'10" Bedroom 3 3.04m x 2.41m    9'11" x 7'10"	<b>42</b> 4 Bedroom Duplex Bedroom 2 4.2m x 2.44m    13'9" x 8'0" Bedroom 3 3.33m x 2.58m    10'11" x 8'5"	<b>51</b> 2 Bedroom Duplex Bedroom 2 3.75m x 3.08m    12'3" x 10'1"
<b>34</b> 3 Bedroom Duplex Bedroom 3 3.03m x 2.41m    9'11" x 7'10"	<b>45</b> 2 Bedroom Duplex Bedroom 2 3.75m x 3.70m    12'3" x 12'1"	<b>52</b> 2 Bedroom Duplex Bedroom 2 3.75m x 3.08m    12'3" x 10'1"
<b>35</b> 3 Bedroom Duplex Bedroom 3 3.03m x 2.41m    9'11" x 7'10"	<b>46</b> 2 Bedroom Duplex Bedroom 1 3.75m x 4.40m    12'3" x 14'5"	<b>53</b> 2 Bedroom Duplex Bedroom 2 3.75m x 3.08m    12'2" x 10'1"
<b>36</b> 3 Bedroom Duplex Bedroom 2 3.36m x 2.44m    11'0" x 8'0" Bedroom 3 4.09m x 1.82m    13'5" x 5'11"	<b>47</b> 2 Bedroom Duplex Bedroom 1 3.75m x 3.60m    12'3" x 11'9"	<b>54</b> 2 Bedroom Duplex Bedroom 2 3.76m x 3.08m    12'4" x 10'1"
<b>37</b> 3 Bedroom Duplex Bedroom 1 4.09m x 2.94m    13'5" x 9'7"	<b>48</b> 2 Bedroom Duplex Bedroom 2 3.75m x 3.08m    12'3" x 10'1"	<b>55</b> 2 Bedroom Duplex Bedroom 2 3.75m x 3.30m    12'3" x 10'9"
	<b>49</b> 2 Bedroom Duplex Bedroom 2 3.75m x 3.08m    12'3" x 10'1"	<b>56</b> 2 Bedroom Duplex Bedroom 2 3.52m x 3.21m    11'6" x 10'6"
		<b>59</b> 3 Bedroom Duplex Bedroom 1 3.61m x 2.68m    11'10" x 8'9"



Studio

One Bedroom

Two Bedroom

Three Bedroom

Four Bedroom

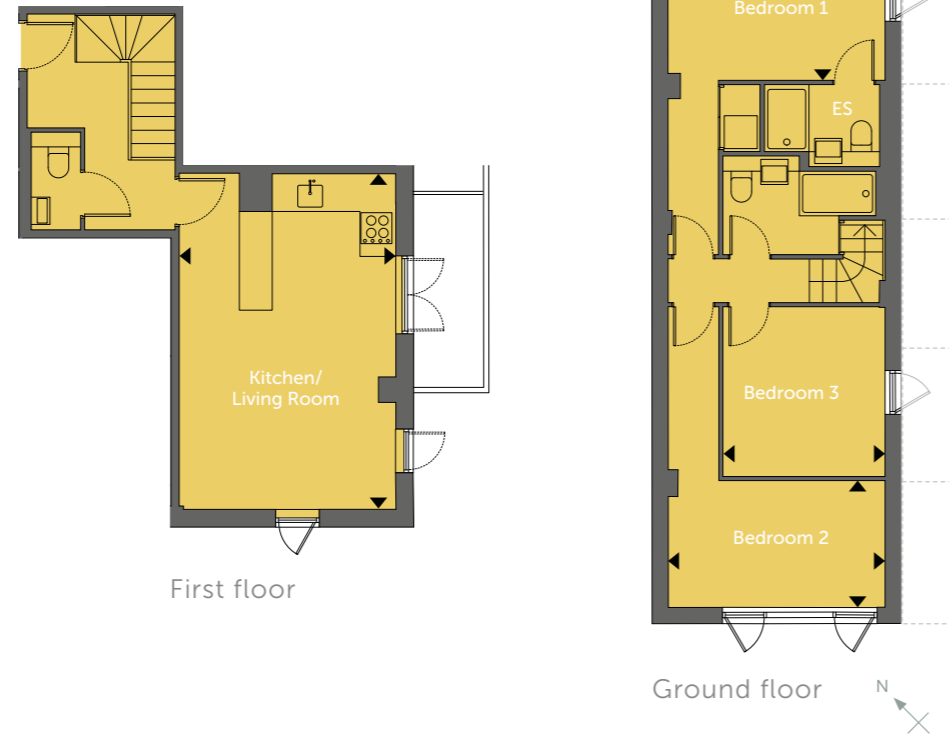


S - Store ES - Ensuite - - - - Reduced ceiling height 1.5m

## APARTMENT 21

3 bedroom duplex apartment  
82.3 sqm - 886 sqf

<b>Kitchen/Living/Dining</b>	3.95m x 6.13m	12'11" x 20'1"
<b>Bedroom 1</b>	3.95m x 2.32m	12'11" x 7'7"
<b>Bedroom 2</b>	2.96m x 3.10m	9'8" x 10'2"
<b>Bedroom 3</b>	3.96m x 2.70m	12'11" x 8'10"
<b>Balcony</b>	1.3m x 3.6m	4'3" x 11'9"



## APARTMENT 35

3 bedroom duplex apartment  
66.4 sqm - 715 sqf

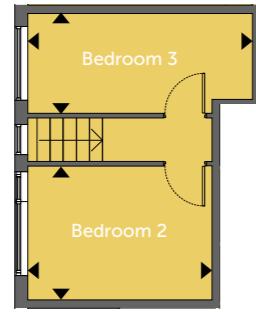
<b>Kitchen/Living/Dining</b>	3.66m x 4.38m	12'0" x 14'4"
<b>Bedroom 1</b>	2.76m x 3.13m	9'0" x 10'3"
<b>Bedroom 2</b>	3.01m x 2.77m	9'10" x 9'1"
<b>Bedroom 3</b>	3.03m x 2.41m	9'11" x 7'10"
<b>Terrace</b>	3.6m x 3.3m	11'9" x 10'9"
<b>Storage</b>	4.6 sqm	50 sqf



## APARTMENT 36

3 bedroom duplex apartment  
82.5 sqm - 888 sqf

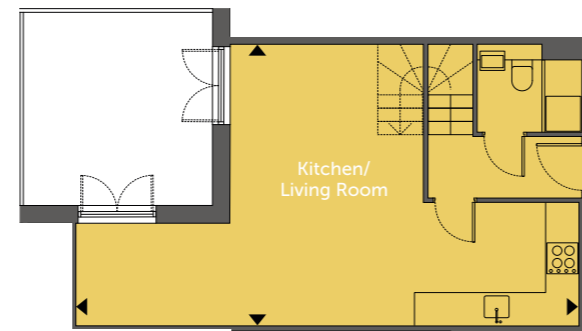
<b>Kitchen/Living/Dining</b>	9.41m x 5.12m	30'10" x 16'9"
<b>Bedroom 1</b>	2.44m x 4.17m	8'0" x 13'8"
<b>Bedroom 2</b>	3.36m x 2.44m	11'0" x 8'0"
<b>Bedroom 3</b>	4.09m x 1.82m	13'5" x 5'11"
<b>Terrace</b>	3.6m x 3.3m	11'9" x 10'9"



Third floor (C)



Third floor



Second floor



Third floor (C)

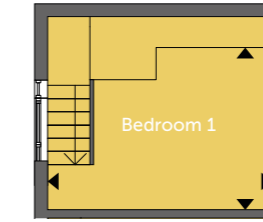
Third floor

Second floor

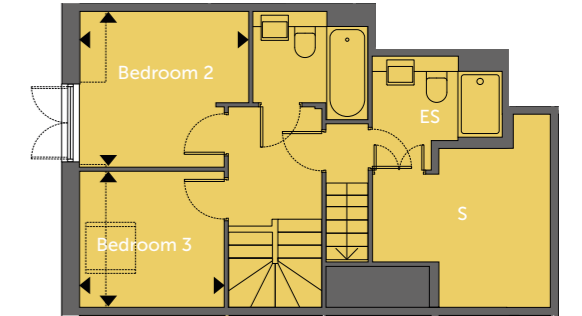
## APARTMENT 37

3 bedroom duplex apartment  
73.5 sqm - 791 sqf

<b>Kitchen/Living/Dining</b>	5.08m x 5.40m	16'8" x 17'8"
<b>Bedroom 1</b>	4.09m x 2.94m	13'5" x 9'7"
<b>Bedroom 2</b>	3.07m x 2.84m	10'0" x 9'3"
<b>Bedroom 3</b>	2.50m x 2.48m	8'2" x 8'1"
<b>Storage</b>	9 sqm	98 sqf



Third floor (C)



Third floor



Second floor



Third floor (C)

Third floor

Second floor

## APARTMENT 40

3 bedroom duplex apartment  
70 sqm - 754 sqf

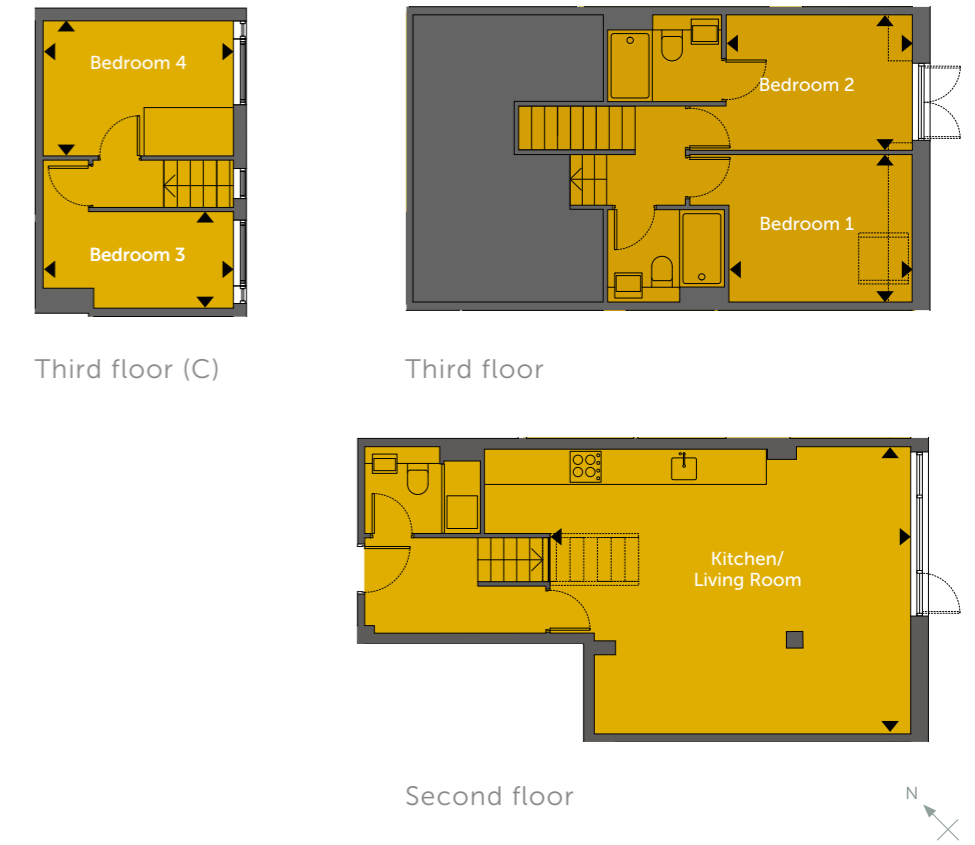
<b>Kitchen/Living/Dining</b>	5.98m x 5.79m	19'7" x 18'11"
<b>Bedroom 1</b>	2.47m x 3.66m	8'1" x 12'0"
<b>Bedroom 2</b>	2.79m x 2.36m	9'1" x 7'8"
<b>Bedroom 3</b>	3.09m x 2.03m	10'1" x 6'7"



## APARTMENT 41

4 bedroom duplex apartment  
91.7 sqm - 987 sqf

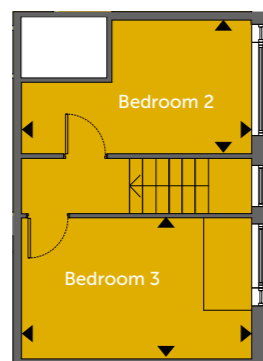
<b>Kitchen/Living/Dining</b>	6.58m x 5.24m	21'7" x 17'2"
<b>Bedroom 1</b>	3.35m x 2.69m	10'11" x 8'9"
<b>Bedroom 2</b>	3.40m x 2.47m	11'1" x 8'1"
<b>Bedroom 3</b>	3.47m x 1.69m	11'4" x 5'6"
<b>Bedroom 4</b>	3.47m x 2.46m	11'4" x 8'0"



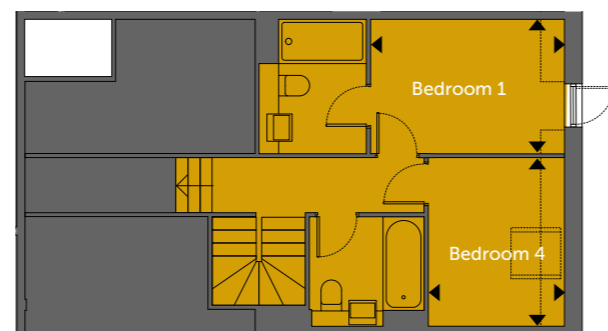
## APARTMENT 42

4 bedroom duplex apartment  
100.9 sqm - 1086 sqf

<b>Kitchen/Living/Dining</b>	5.77m x 5.60m	18'11" x 18'4"
<b>Bedroom 1</b>	3.54m x 2.45m	11'7" x 8'0"
<b>Bedroom 2</b>	4.2m x 2.44m	13'9" x 8'0"
<b>Bedroom 3</b>	3.33m x 2.58m	10'11" x 8'5"
<b>Bedroom 4</b>	2.48m x 3.07m	8'1" x 10'0"



Third floor (C)



Third floor



Second floor



Second floor

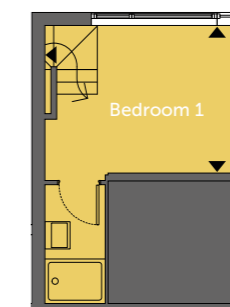
Third floor (C)

Third floor

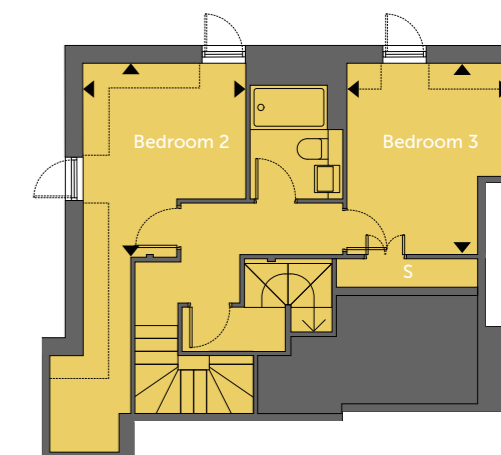
## APARTMENT 59

3 bedroom duplex apartment  
89 sqm - 958 sqf

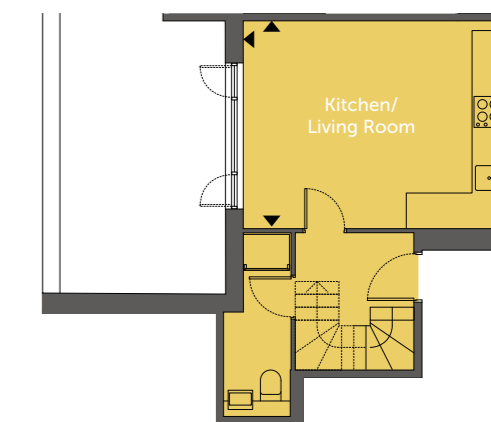
<b>Kitchen/Living/Dining</b>	4.84m x 3.79m	15'10" x 12'5"
<b>Bedroom 1</b>	3.61m x 2.68m	11'10" x 8'9"
<b>Bedroom 2</b>	2.98m x 3.51m	9'9" x 11'6"
<b>Bedroom 3</b>	2.51m x 3.46m	8'2" x 11'4"
<b>Storage</b>	6.2 sq m	67 sq f



Third floor (C)



Third floor



Second floor



Third floor (C)

Third floor

Second floor



**PREWETTS MILL**  
APARTMENTS

Prewetts Mill Apartments, Mill Bay Lane, Horsham RH12 1ST

**[prewettsmill.com](http://prewettsmill.com)**

Call us for more information **01403 265353**

The details in this brochure are intended to give a general indication of the look, feel, dimensions and specifications of Prewetts Mill and the apartments. Some images are computer-generated, giving an artists interpretation of what the finished room may look like.



